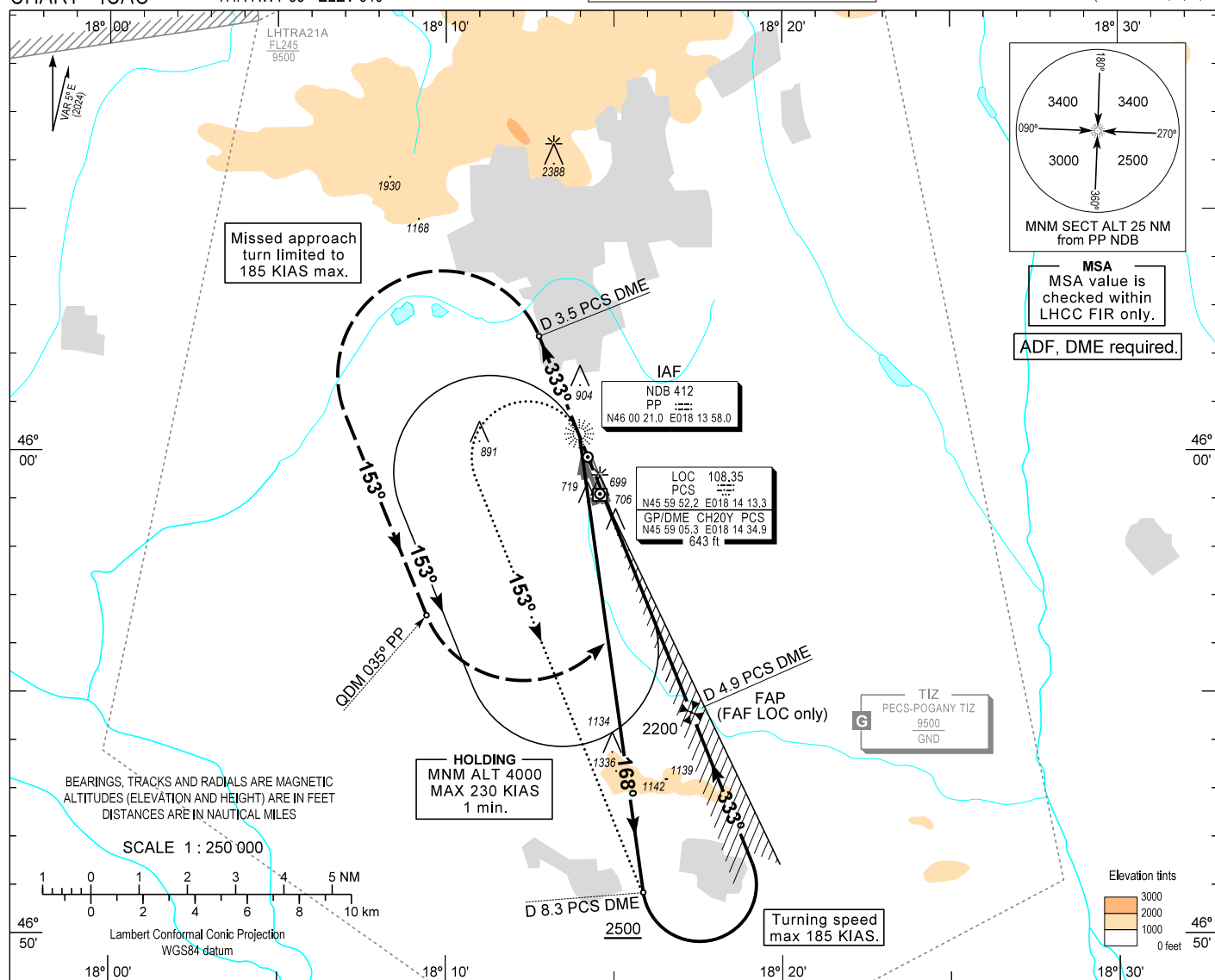


# INSTRUMENT APPROACH CHART - ICAO

AERODROME ELEV 651  
HEIGHTS RELATED TO  
THR RWY 33 - ELEV 640

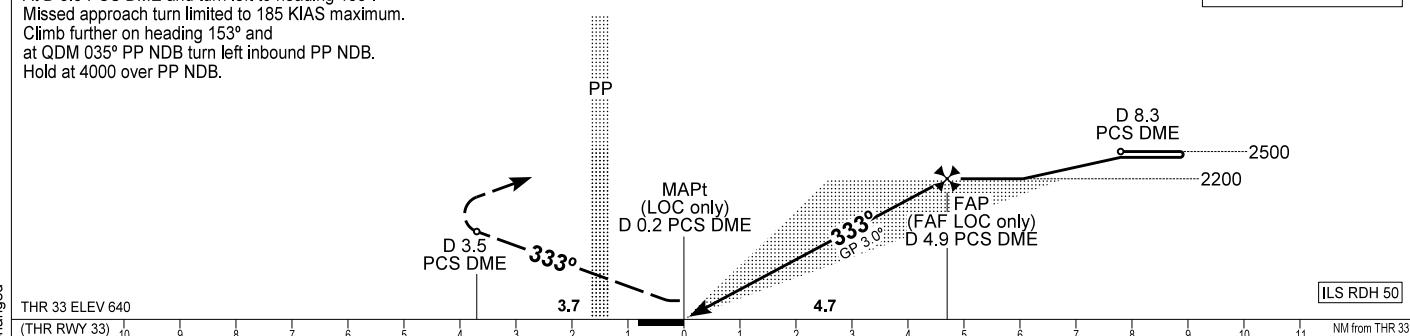
POGÁNY INFORMATION	126.915
BUDAPEST INFORMATION (WEST)	125.500

PÉCS/POGÁNY  
ILS or LOC RWY 33  
(ACFT CAT A, B, C, D)



**MISSED APPROACH**  
Climb straight ahead to 4000.  
At D 3.5 PCS DME and turn left to heading 153°.  
Missed approach turn limited to 185 KIAS maximum.  
Climb further on heading 153° and  
at QDM 035° PP NDB turn left inbound PP NDB.  
Hold at 4000 over PP NDB.

TRANSITION ALTITUDE  
10000



OCA (OCH)			A	B	C	D	DME PCS		NM	4.0	3.0	2.0	1.0	
STRAIGHT-IN APPROACH	Cat. I.	Press. ALT	830 (190)	842 (202)	850 (210)	861 (221)	DIST THR / RWY 33		NM	3,8	2,8	1,8	0,8	
	LOC		960 (320)				ALTITUDE		ft	1910	1590	1280	960	
CIRCLING APPROACH		ft AMSL	1200	1200	1300	1530	Timing not authorized to define the MAPt.							
		VIS. m	1900	2800	3700	4600								
							GROUND SPEED		kt	60	90	120	150	180
							FAF - MAPt 4.74 NM		min:sec	4:44	3:10	2:22	1:54	1:35
							Rate of descent (319 ft/NM)		ft / min	320	480	640	800	960

## AD 2 LHPP INSTRUMENT APPROACH CHART ILS OR LOC RWY 33

Arrivals on 138° - 198° may enter the base turn procedure directly at 4000  
above PP NDB according to the advice of POGÁNY INFORMATION.  
Other arrivals shall enter the holding procedure.

### ILS approach from PP NDB:

Initial altitude: 4000. 185 KIAS max.

Leave PP NDB on QDR 168 and descend to 2500.

At D 8.3 PCS DME turn left to intercept PCS LOC 333° and descend to 2200, then follow ILS.

### ILS approach from PP NDB holding:

Initial altitude: 4000. 185 KIAS max.

At PP NDB turn left to heading 153° and descend to 2500.

Fly outbound and at D 8.3 PCS DME turn left to intercept PCS LOC 333° and descend to 2200, then follow ILS.

### Holding procedure:

Holding fix: PP NDB.

Left hand holding pattern.

Inbound track: 333°

Outbound track: 153°

Rate of turn: 3°/sec. or 25° bank angle  
(whichever requires lesser bank)

Outbound timing: 1 min.

Minimum holding altitude: 4000

Final approach descent (LOC only): 3.00°